

PUSHING AHEAD

KTA CONSTRUCTION, INC.

See how this award-winning utility contractor delivers quality results on high-profile projects



KOMATSU[®]

A MESSAGE FROM THE PRESIDENT



Ronald Zagami

**Innovation
comes in
all sizes**

Clairemont Equipment Company *Parts • Rentals • Sales • Service*
7651 Ronson Road • San Diego, CA 92111-1990 • TEL (858) 278-8351 • FAX (858) 492-9959

Dear Valued Customer:

Komatsu's innovation stands out, regardless of machine size. Case in point, this issue of your Clairemont Pushing Ahead magazine highlights a couple of ways that Komatsu places itself at the forefront of technology at different ends of the equipment spectrum.

One is Komatsu's Autonomous Haulage System (AHS), which celebrates its 10th anniversary this year. The driverless trucks remain on course, thanks to high-precision GPS and other systems. During the past decade, these massive machines have successfully moved more than 1.5 billion tons of material efficiently and safely in mines throughout the world.

Mines typically pair AHS trucks with large excavators. On the other hand, construction companies may rely on smaller machines such as the new PC238USLC-11 tight-tail-swing excavator. Its swing radius is the same as the counterweight, so it's well-suited for applications with limited space.

In between those two machines is Komatsu's PC390LCi-11 that offers exceptional stability and lift capacity while providing the technological edge of *intelligent* Machine Control. It's a great fit for trenching and heavy applications. Read about the PC390LCi-11 inside.

I also encourage you to discover the ways that R&T Ellis is saving time and money with its *intelligent* Machine Control products and see how Madden Materials worked with Komatsu's Business Solutions Group to reduce inefficiencies and lower costs. There is much more to check out in this issue as well.

As always, if there's anything we can do for you, please call or stop by one of our branch locations.

Sincerely,
CLAIREMONT EQUIPMENT COMPANY



Ronald Zagami,
President



PUSHING AHEAD

www.CECPushingAhead.com

IN THIS ISSUE

KTA CONSTRUCTION, INC. pg. 4

See how this El-Cajon contractor accommodates businesses, drivers and even the ocean's tides on the way to producing award-winning work.

GUEST OPINION pg. 8

Stephen Sandherr of the Associated General Contractors of America discusses the impact of the new tax law on the construction industry. Find out more inside.

A CLOSER LOOK pg. 9

Delve into the details surrounding updated OSHA regulations aimed at reducing silica dust exposure.

PRODUCT INTRODUCTION pg. 11

Learn why Komatsu's PC390LCi-11 excavator is a great fit for trenching or heavy-application work.

PRODUCT IMPROVEMENT pg. 12

Check out the new PC238USLC-11 tight-tail-swing excavator that delivers outstanding lift capacity and the KomVision bird's-eye-view camera system.

FIELD NOTES pg. 15

Explore the story behind one contractor's success using a Komatsu PC490LCi-11 excavator to reduce costly overcutting.

CASE STUDY pg. 17

Take a look at this case study showing how Komatsu's Business Solutions Group helped one firm reduce fuel and maintenance costs.

Published by Construction Publications, Inc. for



www.clairemontequipment.com



CORPORATE

7651 Ronson Road • San Diego, CA 92111
(858) 278-8351

SAN DIEGO

4726 Convoy Street • San Diego, CA 92111
(858) 278-8338

ESCONDIDO

1330 Mission Road • Escondido, CA 92029
(760) 739-9100

FONTANA

8520 Cherry Avenue • Fontana, CA 92335
(909) 429-9100

INDIO

81-501 Industrial Place • Indio, CA 92201
(760) 863-5558

IMPERIAL

440 W. Aten Road • Imperial, CA 92251
(760) 355-7700

Not all products represented at all locations.



© 2018 Construction Publications, Inc. Printed in U.S.A.

**YOUR ONE-STOP DEALER...
PROVIDING EQUIPMENT RENTALS,
SALES, SERVICE AND PARTS.**

CORPORATE OFFICE

(858) 278-8351

Mon.-Fri., 8:00-5:00

SAN DIEGO

PARTS (858) 278-8351

Mon.-Fri., 7:00-5:00

Frank Lopez, Parts Department

RENTALS (858) 278-8338

Mon.-Fri., 6:30-5:30 • Sat., 7:00-5:00

Dave Sales, Rental Developer

SALES (858) 278-8351

Mon.-Sat., 8:00-5:00

Bill Hamel, Area Sales Rep.

Misti Kummerfeld, Area Sales Rep.

Kim McMurtray, Area Sales Rep.

Thomas Beny, Used Equipment Online Sales

SERVICE (858) 278-8351

Mon.-Fri., 7:00-3:30

Mark Zagami, Fleet/Service Manager

ESCONDIDO

PARTS • SALES • SERVICE

(760) 739-9100

Mon.-Fri., 7:00-5:00

Greg Seidler, Parts & Service Manager

RENTALS (760) 739-9100

Mon.-Fri., 7:00-5:00 • Sat., 7:30-4:00

Jason Williams, General Manager, (760) 739-9100

Bill Walsh, Rental Developer

FONTANA

PARTS • RENTALS • SALES • SERVICE

(909) 429-9100

Mon.-Fri., 7:00-5:00

George Calzada, Manager

Kelly Forsberg, Parts Manager

Daniel James, Rental Developer

Rick Ramani, Area Sales Manager

INDIO

RENTALS • SALES • SERVICE

(760) 863-5558

Mon.-Fri., 6:30-5:00 • Sat., 7:00-3:00

Ron Cobb, Rental Developer

IMPERIAL

PARTS • RENTALS • SALES • SERVICE

(760) 355-7700

Mon.-Fri., 7:00-5:00

Oliver Gastelo, Manager

KTA CONSTRUCTION, INC.

Award-winning utility contractor delivers quality results on high-profile projects

When most people picture San Diego County they think of an idyllic setting on a Pacific Ocean beach with a clear blue sky and warm temperatures 365 days a year. The unpredictable weather and other natural elements that haunt contractors across the country don't seem to exist in this postcard-worthy area. While the San Diego Tourism Authority would approve of that description, El Cajon-based KTA Construction, Inc., President Mike Henderson knows that even the best climates come with challenges.

"Every job we handle has a unique element to it," explained Henderson. "We have to protect against wildfires and mud slides and take the ocean's tides into consideration as well as the associated conservation regulations. Some of our jobsites are in the mountains while others are on a beach; and yes, it rains.

For the most part, the weather is great here, but we still have some interesting circumstances."

Fortunately for customers in the region, KTA Construction – named after Henderson's three children – Kristina, Troy and Alicia – has navigated those conditions successfully since 1980.

"We started with utilities for residential, tract-home projects," he recalled. "We handled the installation of sewer, water, storm-drain lines and all related structures. That has been the main focus throughout our history, but we've progressed to agency and public works-type jobs, which have become a high percentage of our time today."

A family affair

The staff has also grown to accommodate the increased workload. After starting with seven employees, KTA Construction has nearly 60 today, including Henderson's children, who are each associated with the company to varying degrees.

"It's hard to escape the gravitational pull of the construction industry," joked Henderson. "Troy is a foreman who runs some of our biggest jobs, and he is an excellent operator. Alicia works part time in the office. While Kristina isn't involved directly, she is married to a subcontractor we often work with."

The family feel also extends to the rest of the staff, like Superintendent Kenny Anderson, who has been with KTA Construction in some capacity since he was 14. Today, his daughter Jessica works for the company as well; she is a project manager.

"Kenny's dad used to work on my boat," noted Henderson. "One day, instead of charging me for a repair, he asked me to take

KTA Construction puts its new Komatsu PC238USLC excavator to work on the City of San Diego Sewer & Water Group's 764A project near Point Loma.



Kenny skiing. It was a perfect match, and Kenny's been like a big brother to my kids ever since. He's held about every title a person could have here. In fact, some people thought he ran the company because of his initials."

It's long-tenured employees who enable KTA Construction to stand out from the competition.

"We have people, in addition to Kenny, who have been here for more than 20 years," said Henderson. "We treat them well, and we're stronger because of that. Our staff has a wealth of knowledge to pull from when they are on a job, which makes a huge difference."

Award-winning work

Henderson didn't start KTA Construction to collect trophies and plaques, however the company has received numerous accolades. The firm has earned eight American Public Works Awards (APWA), including three in 2017.

"Our goal is to do quality work on every project," declared Henderson. "I'm proud to say that we've been able to do that consistently."

The Avenida De La Playa project – an 18-foot wide, by 5-foot tall, by 600-foot long box-culvert replacement for the City of San Diego – was KTA Construction's most recent award-winning endeavor. To complete the six-month, \$5 million project that stretched from the heart of downtown La Jolla to the Pacific Ocean, the company called on all of its expertise.

"We negotiated a lot of factors in a short time," stated Henderson. "There was a hard deadline, so we worked rain or shine – and there was quite a bit of rain, since it was an El Niño year. We also accommodated the businesses, traffic and residents of La Jolla and worked around the ocean's tides. At times, we operated around the clock to complete the project."

In addition to the size and elements associated with the Avenida De La Playa job, the project received intense public scrutiny.

"The previous structure failed after just two years of service because of the pressure from rain and the ocean," Henderson explained. "It was a mess. The 40,000-pound tops of the culvert were ripped off, and the street above it



Operator Curt Hendrickson removes a section of a pre-cast box culvert on the La Jolla Avenida De La Playa storm-drain replacement project with a Komatsu PC490LC excavator.

caved in. Clearly, people weren't very happy about that, so there was a lot of negativity around the job before we started. It was the most high-profile project that we have done."

Fortunately, KTA Construction was able to assure area residents and business owners quickly that the endeavor would succeed.

"Taking care of this job was a huge feather in our cap," shared Henderson. "The City of San Diego was ecstatic that we were able to deliver it on time and under budget. We could only have done it with our experienced and dedicated crew."

Continued . . .

'The WA200 is the perfect size'

... continued

33 years of Komatsu

When KTA Construction rolls up to a jobsite, one thing is certain, it has its Komatsu fleet in tow. Considering the company has worked with Clairemont Equipment since 1985, it's clear that Komatsu is KTA Construction's predominant equipment brand.

"We rarely use anything other than Komatsu because it's the best," declared Henderson. "In the beginning, we rented quite a bit, but as we grew, we needed our own fleet. After demoing multiple brands, Komatsu was the clear winner, and that remains the case to this day. We routinely get tens of thousands of hours of production from our Komatsus. Plus, Clairemont is amazing to work with. We've been with them for 33 years for a reason – we trust them."

KTA Construction's go-to machines are tight-tail-swing excavators and smaller wheel loaders for their ability to complete jobs in the tight spaces where the company typically works.

"We have everything from skid steers to 80,000-pound excavators from Clairemont, and

we especially appreciate our Komatsu compact utility machines," offered Henderson. "They are nimble and versatile. We can take them to a site and get everything done."

KTA Construction added two more utility pieces this year when it purchased a PC238USLC excavator and a WA200PZ wheel loader.

"The PC238 is great because we can get into a spot, and our operators don't have to worry about hitting something with the machine's back end, because there isn't one," stated Henderson. "The WA200 is the perfect size. We may only have 40 feet of space to work with on a job, and the WA200 can get into those areas and be productive."

For KTA Construction, the combination of Clairemont and Komatsu is a special one.

"Komatsu makes a great machine, and Clairemont goes above and beyond for us," shared Henderson. "Clairemont will drop everything to help out, and that makes a big difference. We value the relationship. Even after more than three decades, they are still committed to earning our business." ■

This KTA Construction operator uses a Komatsu WA200PZ wheel loader to construct an earthen dam to control incoming ocean tides. This work was part of a storm-drain replacement project in San Diego.



KOMATSU®

WORKS FOR ME™

**"I'VE USED THEM ALL AND
KOMATSU IS THE BEST."**

TAD GRIFFITHS / ROYAL T ENTERPRISES / UTAH

"Komatsu's i-machines definitely make my operators better at what they do. I mean, we haven't been using this technology for the past twenty years, so it's pretty new. But this tech makes it easier to do our job—makes it so that my operators can work more efficiently, and we get a better finished product."



KOMATSU®

THAT'S WHY I AM KOMATSU

komatsuamerica.com

© 2018 Komatsu America Corp. All Rights Reserved



028

A GOOD START

Tax law provides positives for construction businesses, but work still needed to fix Highway Trust Fund



Stephen E. Sandherr,
CEO, AGC

Congress passed comprehensive tax reform legislation that will lower rates, spur economic growth and impact construction businesses for years to come. However, this process did not start as well as it ended for the construction industry.

Initially, the tax reform bill provided little relief for many construction firms organized as pass-throughs, such as S-corporations, limited-liability corporations and partnerships; eliminated Private Activity Bonds essential for financing transportation infrastructure, low-income housing and other public construction and public-private partnership

Stephen E. Sandherr, Chief Executive Officer of Associated General Contractors of America, says the tax legislation passed late last year was a win for construction businesses, but it failed to address the long-term solvency of the Highway Trust Fund. The association continues to focus on rebuilding infrastructure and modernizing multi-employer pension plans.

projects; and repealed the Historic Tax Credit, critical to the private construction market for the rehabilitation and renovation of historic buildings.

Lobbying pays dividends

Associated General Contractors continued to fight for a better outcome for the construction industry through a rigorous lobbying campaign. Efforts included connecting construction company chief financial officers and certified public accountants with tax writers as well as generating thousands of pro-construction messages from members to key legislators. Our work helped convince members of Congress to ultimately reduce the corporate rate by 14 points; lower individual and pass-through rates; double the estate and gift-tax exclusion to \$11 million; ensure that the tax-exempt status of Private Activity Bonds remains untouched; and prevent full repeal of the Historic Tax Credit.

Future focus

That stated, there is still much work to be done in our nation's capital in 2018. Although Congress missed an opportunity to address the long-term solvency of the Highway Trust Fund via tax reform, we remain focused on ensuring that this administration keeps its promise to rebuild the nation's infrastructure. And, we are committed to efforts to modernize multi-employer pension plans for the future, among other priorities for the industry. ■

Editor's note: This article is from a statement by Stephen E. Sandherr, Chief Executive Officer of the Associated General Contractors of America (AGC), regarding final passage of federal tax reform known as H.R. 1, The Tax Cuts & Jobs Act. A chart with information pertaining to the law is available at AGC's website, www.agc.org.



NEW OSHA RULES

Standards reduce silica dust exposure limit, add compliance requirements

A new Occupational Safety and Health Administration (OSHA) rule regarding respirable crystalline silica dust in the construction industry requires covered employers to comply with stricter exposure limits and take steps to protect workers. OSHA reduced the exposure for construction activities to 20 percent of the previous permissible limit (from 250 micrograms per cubic meter of air to 50) averaged throughout an eight-hour shift. The previous standard had been in place since 1971. These new regulations for the construction industry went into effect last fall.

Crystalline silica is a common earth mineral that can be found in sand, stone and other materials. Respirable crystalline silica – very small particles, at least 100 times smaller than ordinary sand – is generated when cutting, sawing, grinding, drilling and crushing stone, rock, concrete, brick, block and mortar, among others, as well as in general excavation. The smaller the particles, the deeper they penetrate into the respiratory tract.

“Silica particles are thrown into the air, and at 10 micrograms they get into your mouth and the top of your throat,” said attorney and author James R. Waite, Esq., who helps companies comply with regulatory standards. “At three to five micrograms, it gets into the chest area and under 2.5, silica dust settles into the lungs and never leaves, which can lead to silicosis and other conditions.”

Silicosis is an incurable lung disease that can lead to death or disability. Lung cancer, chronic obstructive pulmonary disease and kidney disease can also result from respirable silica dust exposure. OSHA estimates the updated standard will prevent 600 deaths and more than 900 cases of silicosis annually.

Options, added steps

About 2.3 million people in the United States are exposed to silica at work each year. Employers have options to meet the standard such as using water to keep dust from getting into the air and proper vacuum dust-collection systems that include HEPA filtration. Utilizing approved respirators with an assigned protection factor of at least 10 under certain conditions, such as sawing more than four hours per day outside or anytime inside, is required.

Additional requirements of the new OSHA standard include:

- Assessing employee exposure to silica, if it is at or above an action level of 25 micrograms per cubic meter of air averaged throughout an eight-hour day and limiting access to high-exposure areas.

Continued . . .

Respirable crystalline silica is generated when cutting, sawing, grinding, drilling and crushing stone, rock, concrete, brick, block and mortar, as well as in general excavation. About 2.3 million people in the United States are exposed to silica at work annually.



**James R. Waite, Esq.,
Attorney at Law**

James R. Waite, Esq. is an equipment industry attorney. He authored the American Rental Association's book on rental contracts and represents equipment sellers and lessors throughout North America on a wide range of issues.



'It's best to monitor'

... continued

- Establishing and implementing a written exposure-control plan, which identifies tasks that involve exposure as well as methods used to protect workers, including procedures to restrict access to work areas where high exposures may occur.
- Designating a competent person to implement the written control plan.
- Restricting housekeeping practices that expose workers to silica, such as the use of compressed air without a ventilation system to capture the dust and dry sweeping where effective, safe alternatives are available.
- Offering medical exams – including chest X-rays and lung-function tests – every three years for workers who are required by the standard to wear a respirator for 30 or more days in a given year.
- Training workers on the health effects of silica exposure, workplace tasks that can bring them into contact with silica, and implementing alternative means of limiting exposure.

A new Occupational Safety and Health Administration rule regarding respirable crystalline silica dust reduced the previous exposure limit to 50 micrograms per cubic meter of air averaged throughout an eight-hour shift. Employers have options to meet the standard such as using water to keep dust from getting into the air, proper vacuum-dust collection systems and approved respirators.



- Keeping records of workers' silica exposure and medical exams.

OSHA training requirements for workers must include instructions on the health hazards of silica dust, a list of workplace tasks that can result in exposure, steps their employer has taken to protect employees and the purpose of the medical exams. Workers should be able to demonstrate knowledge of the topics during an OSHA investigation. Penalties include a fine of \$12,741 per violation, generally assessed per day for failure to abate and \$124,709 per violation for "willful" or "repeat" violations.

"No one can tell by just looking if they're at or above the monitoring level, so it's best to monitor," said Waite. "If you are below 25 micrograms per cubic meter, great. If not, it's critical to meet the requirements to avoid violations and potential liability that could lead to legal claims."

Waite said there are additional steps that companies can take to protect themselves and workers such as putting stickers on equipment that warn of potential exposure and posting signs at all entry and exit points to and from regulated areas. When cleaning equipment, individuals should never use compressed air and the person(s) performing the task should wear protection such as a proper respirator.

No excuses

A separate standard was created for general and maritime industries. It, along with rules for hydraulic fracturing, goes into effect June 23, 2018.

OSHA has programs that provide assistance to help small- and medium-size firms comply with the standards. It also has fact sheets available online at osha.gov.

"Contamination and the associated legal liabilities are nothing new," said Waite. "But, when governmental agencies like OSHA begin modifying long-accepted standards, business owners are wise to take action. Enhanced focus on regulations tends to yield similar enhancements in enforcement, making arguments such as, 'We've done it this way for 30 years,' largely irrelevant." ■



Discover more

INTELLIGENT EXCAVATOR

New model offers added stability, excellent over-the-side lift capacity in efficient combo package

Have you ever wanted more? The PC390LCi-11 excavator from Komatsu provides more stability, achieving excellent balance among power, speed and fine control. This machine utilizes the upper structure and engine of the PC360LC models and the undercarriage of a 400-class machine. Now, Komatsu has taken that concept and made it intelligent with the introduction of its new Tier 4 Final PC390LCi-11.

“The *intelligent* Machine Control PC390LCi-11 delivers the exceptional production and speed of the PC360LCi-11, with full-factory, 3-D Global Navigation Satellite System machine control along with increased stability from its up-sized undercarriage,” said Komatsu Product Specialist Renee Kafka. “This makes for the perfect combination in applications such as utility or wherever heavy lifting occurs.”

The 257-horsepower PC390LCi-11 is the fourth installment in the *intelligent* Machine Control excavator lineup. It leverages the proven technology first introduced on the PC210LCi-10, including semi-automatic operation that goes beyond traditional indicate-only systems. Once target elevation is reached, the machine keeps the operator from digging deeper, eliminating overexcavation and the need for expensive fill.

intelligent Machine Control benefits

The Steer-to-Polyline feature helps operators actively dig to a center line, keeping a utility trench on track and minimizing waste. It’s also easy for operators to create simple surfaces quickly for pipe runs by themselves.

“To increase comfort and convenience, the PC390LCi-11 comes standard with the machine-control-enhanced joysticks that were initially introduced on the PC210LCi-11,” noted Kafka. “Whether it is production excavating, utility trenching or heavy-attachment work, this machine helps make operators’ jobs easier, while reducing material costs by minimizing overexcavation.” ■



Renee Kafka,
Komatsu Product Specialist

Quick Specs on Komatsu’s PC390LCi-11 Excavator

Model	Net Horsepower	Operating Weight	Bucket Capacity
PC390LCi-11	257 hp	87,867-90,441 lb	.89-2.91 cu yd

Komatsu’s PC390LCi-11 delivers the exceptional production and speed of the PC360LCi-11, with full-factory, 3-D Global Navigation Satellite System machine control along with increased stability from its up-sized undercarriage, making it a great fit for trenching or heavy-application work.





Discover more

TIGHT-TAIL-SWING PERFORMANCE

New excavator delivers outstanding lift capacity; KomVision bird's-eye-view camera available



Andrew Earing,
Product Manager,
Tracked Machines

You can get dynamite performance in a small package. Komatsu's Tier 4 Final PC238USLC-11 proves it with a heavy counterweight mass and rounded cab that provide true tight-tail-swing performance and greater lift capacity than most conventional excavators of the same size. And, it boosts productivity up to 4 percent compared to the Dash-10 with a new viscous fan clutch that lowers engine parasitic loads.

"The PC238USLC-11 maintains the tight-tail-swing radius of its predecessor,

making it well suited for utility and highway applications and when working in confined spaces," said Andrew Earing, Product Manager, Tracked Machines. "The machine's contoured cab profile and sliding door allow the cab to swing within the same radius as the counterweight. The additional counterweight remains standard, giving the PC238USLC-11 equal or better lift capacity than conventional models in the same size class."

The PC238USLC-11 is available with Komatsu's new KomVision, a bird's-eye-view camera system that combines input from three cameras into a surround-view image of the machine and its environment that improves operators' situational awareness.

Komatsu's PC238USLC-11 excavator features a heavy counterweight mass and rounded cab that provide true tight-tail-swing performance and better lift capacity than most conventional excavators of the same size. A new viscous fan clutch lowers engine parasitic loads, increasing productivity up to 4 percent.

Monitor panel improvements

Komatsu upgraded the high-resolution, LCD monitor panel, incorporating the standard rearview camera display with gauges. "Ecology Guidance" provides fuel-saving information to the operators, and they can still choose from six working modes to most effectively match the application, attachment and working conditions.

"In addition to the PC238USLC-11 measuring 40 percent shorter than the conventional PC210LC-11, this machine offers class-leading serviceability with quick access to the DEF pump and filter, PPC valves, batteries and aftertreatment components," said Earing. "Durability is second-to-none, with thick-plate steel used on the revolving frame, heavy-duty boom and arm structures, and easy-to-access cooling-system-debris screens. Overall, the PC238USLC-11 is a true purpose-built, short-tail excavator designed and crafted to outlast the competition." ■



KOMATSU®

WORKS FOR ME™



"THE TECH MAKES ME FASTER."

JEROME HAYCRAFT / ASPLIN INC. / FARGO, ND

INTELLIGENT MACHINE CONTROL

"We have a Komatsu PC210LCi and it's been better than I even expected. The speed and time you save just having your line work and not having to worry about over excavating—that's huge. I hated those bigger commercial jobs where you'd have hundreds of stakes marking all your corners, offsets and gridlines. And to not have a need for any of that, especially if it's an export site or it doesn't even really have to be, just room for your spoil piles. Keeping track of corners—major time saver! I'd say, with iMC, I'm about a third faster getting the job done."

SMARTCONSTRUCTION

KOMATSU

THAT'S WHY I AM KOMATSU

komatsuamerica.com



KOMATSU®

WORKS FOR ME™

**"THERE'S NOTHING THIS
HI-TECH OUT THERE!"**

ANTHONY CARLTON / OWNER / CARLTON, INC / ALPINE, UT

"Using and understanding the new product technology, available from Komatsu for our business, made me apprehensive at first. But our dealer and their technical support have worked with us to help us make the tech work for our needs. I am seeing the benefits now. I'm on board and love it!"



KOMATSU®

THAT'S WHY I AM KOMATSU

komatsuamerica.com

© 2018 Komatsu America Corp. All Rights Reserved



029



Discover more at
CECPushingAhead.com

GETTING TO GRADE FASTER

Earthwork, pipeline contractor eliminates overcutting with Komatsu PC490LCi-11 excavator

When Randy Ellis and his wife, Trisha, prepared to build a home on the family's ranch, he was shocked at the price to purchase 300 loads of dirt for the pad. Instead of paying for the material, Ellis bought a dump truck and a rubber-tire backhoe, dug a pond on his property and used the dirt for the house pad. While he didn't realize it at the time, this was the origin of what today is a successful earthwork and pipeline business, R&T Ellis, Inc.

Nearly a year ago, R&T Ellis purchased its first Komatsu excavator, an *intelligent* Machine Control PC490LCi-11.

"We already had used Topcon aftermarket GPS, so I liked that Komatsu integrated it into its *intelligent* Machine Control products," said Ellis. "It saves us time and money by eliminating the need to put up and take down the masts, and we no longer worry about them getting damaged or stolen."

R&T Ellis recently put the PC490LCi to work on a project that involved digging a canal from a river to a treatment plant in preparation for bringing a new supply of drinking water to a major U.S. city. The company's role included clearing 350 acres, building a six-and-a-half mile gravel access road to the canal, installing piping and moving more than 650,000 yards of earth.

"It's like a knife through butter," shared R&T Ellis Operator Sergio Bellestros about his experience in digging with the excavator on the canal project. "With the built-in GPS, I can get to grade without worrying about overcutting or having to leave it at a certain elevation for a dozer to finish."

Plug in plans and go

The excavator utilizes 3-D design data loaded into the machine's monitor to accurately display machine position relative to target grade. When the bucket reaches the target surface, automation kicks in to limit overexcavation.

"What stands out (about the PC490LCi) is the increased production and efficiency. We simply plug the plans into the machine and go to work. With minimal staking, we can put everything to grade faster and without the concerns about overcutting or needing someone to constantly check grade," noted Ellis. ■



Randy Ellis,
President

R&T Ellis Operator Sergio Bellestros loads trucks with a Komatsu *intelligent* Machine Control PC490LCi-11. "It's like a knife through butter," described Bellestros of digging with the excavator. "With the built-in GPS, I can get to grade without worrying about overcutting or having to leave it at a certain elevation for a dozer to finish."

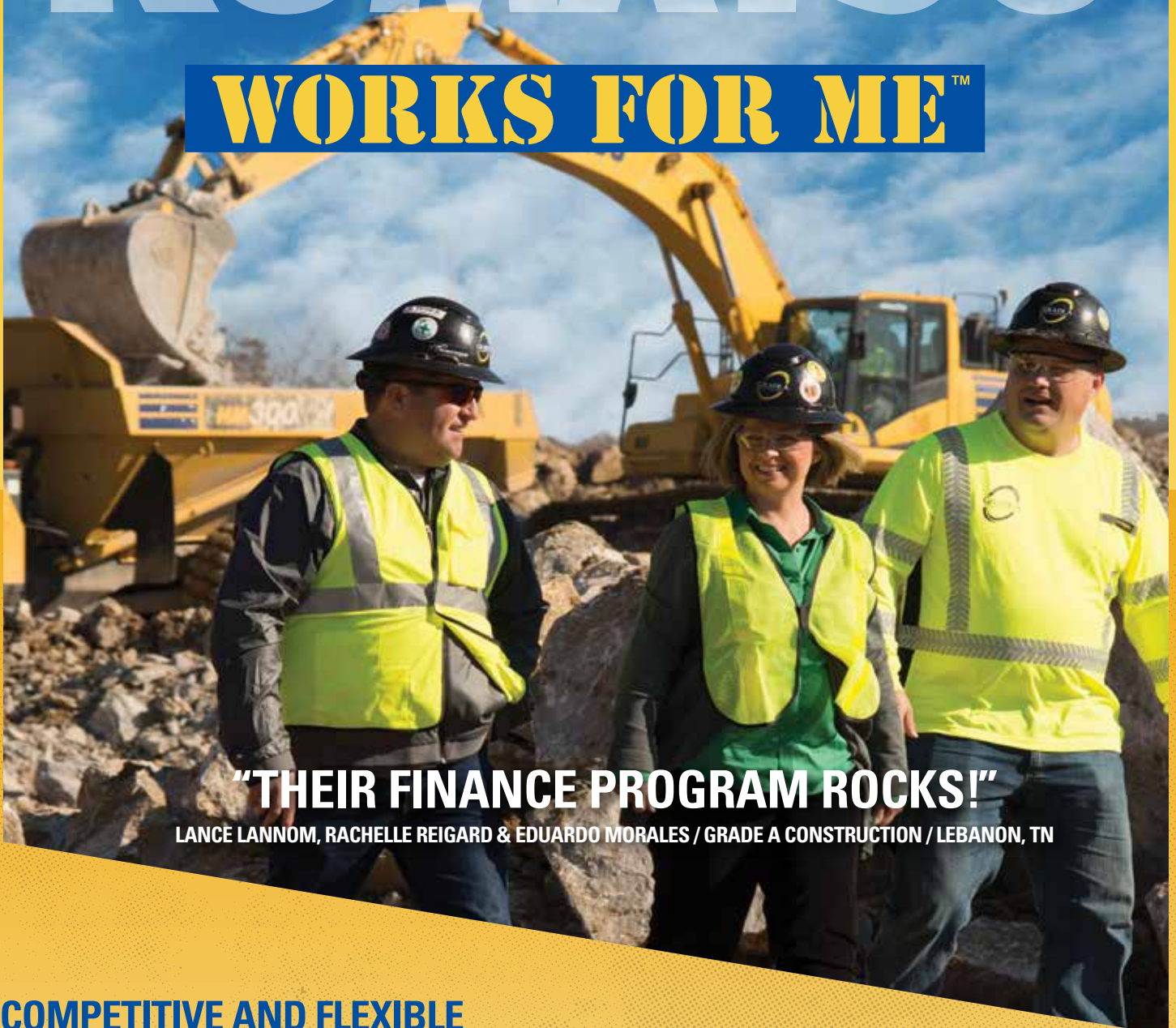


▶ VIDEO



KOMATSU®

WORKS FOR ME™



"THEIR FINANCE PROGRAM ROCKS!"

LANCE LANNOM, RACHELLE REIGARD & EDUARDO MORALES / GRADE A CONSTRUCTION / LEBANON, TN

COMPETITIVE AND FLEXIBLE

KOMATSU
FINANCIAL

"Komatsu has been a great partner for us. They've been with us through the years, even when we started small and not many other places wanted to talk to us. They believed in us and helped us grow. From a custom financing plan to tech like KOMTRAX, to customer service and Komatsu CARE, and of course reliable products—they offer everything to help our bottom line grow." **Rachelle Reigard, President**

KOMATSU®

THAT'S WHY I AM KOMATSU

komatsuamerica.com

© 2018 Komatsu America Corp. All Rights Reserved





Discover more at
CECPushingAhead.com

BUSINESS SOLUTIONS GROUP

Team assesses Madden Materials' operations; improvements save enough to buy additional equipment

Approximately two years ago, Joe and Sofia Regalado acquired Madden Materials, adding to the couple's already hefty work load as they operated a trucking company and another material supply business. The new venture came with challenges, so they turned to their local Komatsu distributor, who connected them with the Business Solutions Group to help formulate an action plan.

The Business Solutions Group offers bottom-line tactics that maximize production and efficiency. The group studies customers' existing operations, considers alternatives and provides recommendations. The service is complimentary.

In Madden Materials' case, the Business Solutions Group partnered with the distributor to conduct an Optimized Fleet Recommendation (OFR) study on how to move sand from the pit to a new wash plant most effectively. Members of the Business Solutions Group took into account the productive potential of various sizes of excavators, wheel loaders and trucks to identify the most efficient fleet, depending on production needs and other factors.

"They assessed the site – how we load, haul distance, tons of product the plant needed per hour – and determined that smaller units would be best," said Owner/Chief Executive Officer Joe Regalado. "They projected operating costs by considering fuel, operator pay, maintenance and more."

Before the study, Regalado was convinced he needed to add a large truck, possibly a 60-ton rigid frame, and pair it with an existing 50-ton-plus excavator. The Business Solutions Group showed him other options, including using a Komatsu 30-ton articulated dump truck and a PC360LC excavator.

Money-saving strategies

"The same production with smaller equipment means less fuel and maintenance as well as lower overall costs," said Regalado. "The study saved us enough money that we could buy a second WA380 loader. The assessment was done at no charge. That's an incredible benefit, and they have finished a second OFR study to determine our present and future needs as we continue to expand and move farther away from the plant." ■



Joe Regalado,
Owner/Chief
Executive Officer,
Madden Materials

Komatsu's Business Solutions Group recommended a smaller articulated haul truck, an HM300, as part of its assessment of Madden Materials' operations. "The same production with smaller equipment means less fuel and maintenance as well as lower overall costs," said Joe Regalado, Owner/Chief Executive Officer.

▶ VIDEO



NEW HORIZONS

New Director of Training and Publications Bill Chimley aims for world-class results



**Bill Chimley, Director of
Training and Publications**

This is one of a series of articles based on interviews with key people at Komatsu discussing the company's commitment to its customers in the construction and mining industries – and their visions for the future.

Bill Chimley took over as the Director of Training and Publications at the Komatsu Cartersville Customer Center in Cartersville, Ga., in October 2017. Prior to that, he served for five years as the General Manager of the Supply Chain Division at the Chattanooga Manufacturing Operation facility. "I am very excited to be here in this new position," said Chimley. "We host some incredible events for both our customers and employees. From Demo Days to daily training classes, we have a lot of traffic through this facility."

Chimley has 13 years of experience with Komatsu. He worked as a District Sales Manager covering multiple South Region distributors before moving to the Supply Chain Division in 2010 when he was named Manager of Customer Support and Logistics. In 2012, Chimley was promoted to the General Manager position, where he was responsible for the planning, ordering and logistics of mining, construction, utility and forestry machines in North America.

At each stop, Chimley has focused on improvement strategies. "Komatsu America practices a philosophy called 'Kaizen,' which means continual improvement," explained Chimley. "In every position, I've tried to raise the bar, whether that means implementing inventory forecasting process improvements or designing how we use technology to deliver training and publications materials, Komatsu is very supportive."

Away from the office, Chimley enjoys spending time with his wife and two teenage daughters. They love to travel and listen to music together. Chimley's ideal get away would be trout fishing in a cold mountain stream on a sunny spring day.

QUESTION: How does Komatsu America's Training and Publications team lead the world?

ANSWER: Due to the timing of the engine emission requirement in North America, we needed to develop new-model training and publication materials first. This means our training and publications development teams have blazed the trail since 2011. Because we have experience being content-development leaders, we also need to take the lead in using digital-learning platforms and the latest technologies available. We want Komatsu America Training and Publications to be a center of excellence.

QUESTION: What is your vision for the Training and Publications area?

ANSWER: Our vision is to continue a strong foundation of material development while using the latest technology to increase the effectiveness of our material delivery. Through technological advances, the speed and ease of learning is expanding exponentially, allowing Komatsu customers, distributors and employees to easily access our offerings.

QUESTION: How do you plan to maximize the effectiveness of the Cartersville Customer Center?

ANSWER: To anyone who has yet to visit the Cartersville Customer Center, we extend an open invitation. During the past 12 months, we have hosted the highest number of visitors since the facility opened in 2001. Our amenities include a 35-acre demo site; a beautiful 40,000-square-foot main building with multiple classrooms, offices and state-of-the-art auditorium; as well as a 20,000-square-foot shop – all situated on 600 acres just north of Atlanta. Visitors are absolutely blown away by this facility. Our primary goal



Spring and fall Demo Days are the two most visible events at the Cartersville Customer Center, according to Director of Training and Publications Bill Chimley.

is to share resources with our distributors and affiliate business partners by providing world-class training, demonstration and meeting facilities.

QUESTION: Are other types of events held at the center?

ANSWER: While the two most visible customer events are Demo Days each spring and fall, we also host approximately six major annual training events covering all aspects of our business. Filling in the day-to-day of our calendar are numerous technical, operator and sales class offerings. The center is a versatile facility with an incredible support staff that creates a safe and effective learning environment.

QUESTION: How do you see the Cartersville Customer Center evolving in the next few years?

ANSWER: We are in the process of upgrading our wireless network to enable full connectivity of people, machines and classrooms – even beyond our campus. A growth area in 2018 is live-streaming class videos, which will allow technicians, for example, to stay in the field and participate in training without losing precious days due to travel.

Last spring, we completely redesigned the theatre, which also doubles as our largest classroom. This winter, we made upgrades to the demo site, making it both safer and more functional, especially to support SMARTCONSTRUCTION technologies. Future visions for the Cartersville Customer Center include developing a quarry demonstration area to offer a more realistic operation experience, creating an executive briefing area where we can learn from our customers and share Komatsu's total business solutions, and making this facility a center of excellence for all of our publications. ■



Director of Training and Publications Bill Chimley (far right) listens as a group of Komatsu sales representatives participate in a training session inside the Cartersville Customer Center's newly renovated theatre.

Schedule a visit to Cartersville today!



Komatsu Cartersville Customer Center

- **35-acre demo site**
 - More than 50 machines available to operate
- **Customized agendas based on your needs**
 - Machine walk-arounds
 - Speak with product experts
 - Discuss machine optimization, maintenance and service

Contact us today for more information or to schedule your visit to the Cartersville Customer Center!

Visit komatsuamerica.regfox.com/cartersville-customer-center-demo-request or email CCC@KomatsuNA.com

NEW REMAN FACILITY

Komatsu helps customers save money, boosts availability of high-quality remanufactured products



Michael Carranza,
Product Manager



Goran Zeravica,
Senior Product Manager

If you need to replace components, or even an engine, you want the most-cost effective solution possible. Oftentimes, that may involve using the high-quality remanufactured products available through Komatsu's reman facilities.

Recently opened, and located at the Chattanooga Manufacturing Operation, the reman facility grew out of a fact-finding effort in Komatsu's Reman/Overhaul Group led by Senior Product Manager Goran Zeravica and Product Manager Michael Carranza. One of their first steps involved talking with customers and Komatsu distributors to gauge their expectations.

"They provided valuable feedback to act upon, including the need for expanding our availability and offering of reman products," shared Zeravica. "That's one of the reasons

we opened a new reman facility; the other reason was to expand engine-testing ability for our customers. The new facility supplies like-new engines that meet Komatsu's stringent standards, so customers can rest assured they are getting quality, reliable products with long lives."

Substantial inventory

Komatsu has already amassed an extensive inventory. Reman products are available from various sources such as the Ripley Parts Operation, Peoria Parts Department and regional parts depots.

"Availability and fast access are vital to minimizing downtime," said Carranza. "A good inventory ensures that when an order is placed, a replacement item is shipped right away. Once the repair is complete, the customer can send in their used component, and we will give them a credit for it."

Quality confidence

Komatsu demonstrates its confidence in reman products by providing two warranties*:

Komatsu Genuine Reman Warranty Coverage (Standard):

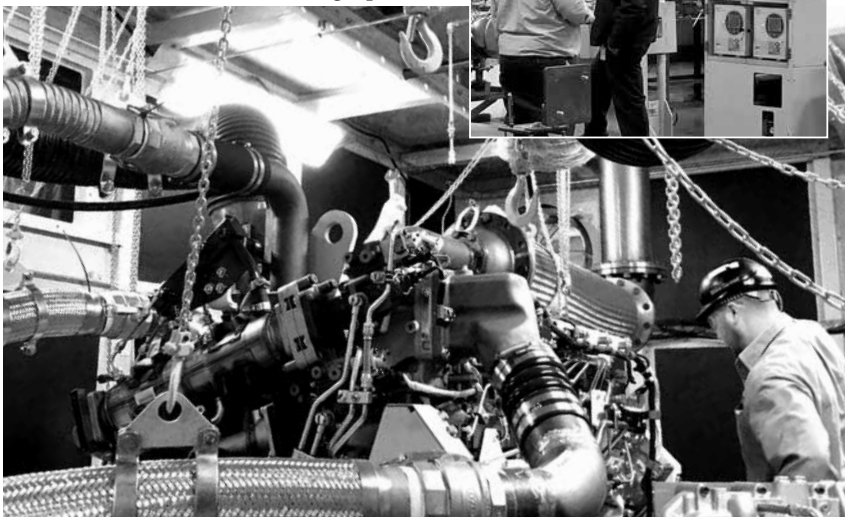
- Applies to Genuine Reman components
- One year
- Unlimited hours

Komatsu Genuine Reman Component Quality Assurance:

- Applies to engines, transmissions, torque flows, final drives, differentials, axle assemblies, travel motors and main hydraulic pumps
- Four years
- Prorated, up to 10,000 hours ■

* Additional qualifications are required. Talk to your Komatsu distributor for more information.

Komatsu's new reman facility brings original equipment manufacturer expertise to the table, while boosting availability through reman and retesting capabilities.



DRIVERLESS TRUCKS

Komatsu celebrates 10th anniversary of autonomous haulage system

This year marks 10 years since the commercial deployment of Komatsu's autonomous haulage system (AHS), and based on its proven track record of safety and productivity, the company plans to ramp up the pace of distribution. Komatsu was the first manufacturer in the world to commercialize AHS – driverless trucks – in the mining industry.

More than 100 AHS trucks presently operate in North America, South America and Australia. Running around the clock, they haul three different commodities in six mines. By the end of 2017, Komatsu AHS trucks had recorded a world-leading cumulative total of 1.5 billion tons moved.

According to Komatsu, each truck is equipped with vehicle controllers, a high-precision GPS system, an obstacle-detection system and a wireless network system. These features allow the trucks to operate safely through a complex load, haul and dump cycle, as well as integrate with dozers, loaders and shovels.

Komatsu began AHS trials in 2005 at a copper mine in Chile and successfully achieved the world's first commercial deployment three years later. A second followed in late 2008 at Rio Tinto's iron ore mine in Australia. The company currently operates AHS trucks in four mines in the Pilbara region of Australia. Rio Tinto controls the system remotely and efficiently from its operations center in Perth, almost 1,000 miles away.

Using AHS, one customer reported improved productivity, reducing load and haul-unit costs by more than 15 percent compared to conventional haulage methods. In addition, optimized automatic controls reduce sudden

acceleration and abrupt steering, resulting in 40 percent longer tire life for that same customer. AHS is significantly safer in conventional mining environments, where even a minor driving error could cause a serious accident, according to Komatsu.

New initiatives

To extend the benefits to operations with manned haul fleets, Komatsu conducted and successfully completed trials of its AHS retrofit kit at a Rio Tinto mine in September 2017. It was mounted on an electric-drive standard 830E (220-ton payload) and enabled the truck to operate in autonomous mode. Komatsu plans to expand the AHS retrofit kit to additional models of electric-drive standard trucks. It will also enhance AHS's mixed-fleet operations functions to enable manned haulers of any make to safely interoperate with Komatsu's AHS trucks in a blended fleet. ■

To date, Komatsu's autonomous haulage system (AHS) has recorded a world-leading cumulative total of 1.5 billion tons moved. Using AHS, one customer reduced load and haul unit costs by more than 15 percent compared to conventional haulage methods.



NO FATALITIES GOAL

Research suggests Safe System and Vision Zero traffic-planning approaches would save lives

Research from the World Resources Institute (WRI) and the World Bank concludes that if all countries adopted a Safe System or Vision Zero approach to safety and traffic infrastructure, nearly a million lives could be saved around the world each year. WRI analyzed data from 53 countries and found that using Safe System tactics achieved both the lowest rates of traffic deaths and the largest reduction in fatalities in a 20-year period.

The report, “Safe and Sustainable: A Vision and Guidance for Zero Road Deaths,” emphasizes the importance of committing to no fatalities, upholding the Safe System principles of shared responsibility and reducing human error; as well as instituting structural fixes like better sidewalks, bike lanes, high-quality public transportation, safer vehicles and faster emergency response, according to WRI. The study says that it’s important for planners to take those factors into account when designing roadways.

Traffic fatalities claim more than 1.2 million lives annually. WRI found that to eliminate road deaths, policymakers must adhere to

Safe System tenets: humans make errors and are vulnerable to injury; responsibility for the consequences should be shared, no death or serious injury is acceptable; and the best plan is a proactive, systemic one.

Sweden and the Netherlands began a Safe System program more than 20 years ago and have lowered their traffic fatalities to between three and four deaths per 100,000 residents annually, a decrease of more than 50 percent. The global average is 16.4 fatalities per 100,000 residents and 24.1 per 100,000 in low-income nations. More than 40,000 die on U.S. roadways every year.

Multi-pronged plan

Approximately 30 cities in the United States are using Vision Zero, which is similar to Safe System. Vision Zero takes the view that traffic deaths and severe injuries are preventable by utilizing proven strategies such as lowering speed limits, redesigning streets, implementing meaningful behavior-change campaigns and enhancing data-driven traffic enforcement. It also demonstrates that planning fosters cross-disciplinary collaboration among local traffic planners and engineers, police officers, policymakers and public-health professionals.

“We can dramatically reduce and eventually eliminate road-crash fatalities if we follow a Safe System approach,” said Soames Job, who heads the World Bank’s Global Road Safety Facilities and is one of the report’s co-authors. “Vision Zero is becoming a popular policy to embrace, but what it really means is committing to zero deaths and building in safeguards. By designing transportation systems for inevitable human error and placing a greater responsibility on officials, road designers and decision makers, we can profoundly reduce road-crash fatalities.” ■

A report from World Resources Institute and the World Bank emphasizes a commitment to no fatalities and upholding principles such as reducing human error, and instituting structural fixes like better sidewalks, bike lanes, high-quality public transportation, safer vehicles and faster emergency response.



SIDE TRACKS

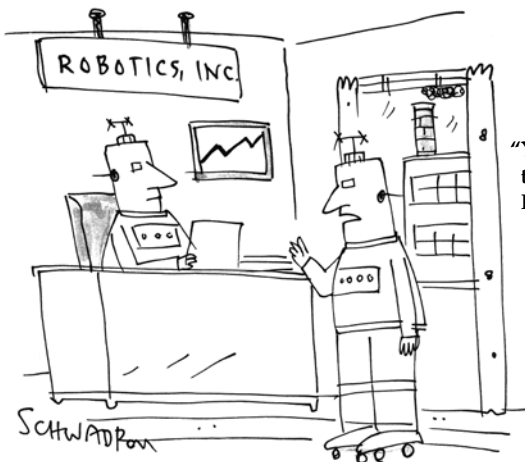
On the light side



"Space exploration has gotten easier now!"



"Why do I need a brain when I can just Google everything?"



"You can't transfer me to the night shift – I'm solar powered."

Did you know?

- The expiration date on water bottles is for the bottle, not the water.
- Hawaii is the only U.S. state that grows coffee.
- Your nose can remember 50,000 different scents.
- Polar bear fur is transparent, not white.
- When you blush, the lining of your stomach also turns red.
- There are 403 steps from the foundation to the top of the Statue of Liberty's torch.
- All pandas in the world are on loan from China.
- Zero is the only number that cannot be represented by Roman numerals.
- During the American Civil War, kites were used to deliver letters and newspapers.
- James Buchanan was the only U.S. President who was never married.
- The first pro baseball games aired on television August 26, 1939 – a doubleheader between Brooklyn and Cincinnati.

Brain Teasers

Unscramble the letters to reveal some common construction-related words. Answers can be found in the online edition of the magazine at www.CECPushingAhead.com

1. GNIGIDG ____ G _____
2. TEFEL ____ E _____
3. LMCAP ____ M _____
4. ORDO _____
5. NFA _____

QUALITY PRODUCTS supported by SUPERIOR CUSTOMER SERVICE

Serving southern California since 1970



FONTANA

INDIO

ESCONDIDO

IMPERIAL

SAN DIEGO

KOMATSU[®]

YANMAR FINN

JLG
An Oshkosh Corporation Company

Atlas Copco

STIHL[®]

**Clairemont
Equipment**
RENTALS • SALES • SERVICE



www.clairemontequipment.com

Not all products represented at all locations.

SAN DIEGO, CA
(CORPORATE)
7651 Ronson Road
(858) 278-8351

SAN DIEGO, CA
4726 Convoy Street
(858) 278-8338

INDIO, CA
81-501 Industrial Place
(760) 863-5558

FONTANA, CA
8520 Cherry Avenue
(909) 429-9100

ESCONDIDO, CA
1330 Mission Road
(760) 739-9100

IMPERIAL, CA
440 W. Aten Road
(760) 355-7700